

Binding Close
Carrington, Nottingham NG5 1RG

A TWO-BEDROOM FLAT SITUATED IN
CARRINGTON, NOTTINGHAM.

Asking Price £135,000 Leasehold



**** CARRINGTON LOCATION ** IDEAL BTL WITH TENANTS IN SITU ****

Robert Ellis Estate Agents are delighted to offer to the market this FANTASTIC TWO-BEDROOM, FLAT SITUATED IN A POPULAR COMPLEX WITHIN CARRINGTON, NOTTINGHAM.

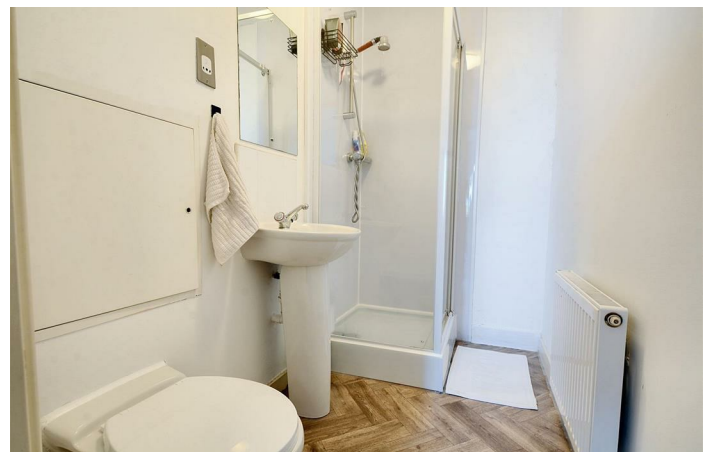
The complex offers lift access, an intercom system and stairs. It is maintained well throughout and has a central location for young professionals.

It is ideally located within walking distance of Tesco Express, alongside Sherwood's High Street which offers a mixture of restaurants, bars and retail shops. Transport links on Hucknall Road allow access to Nottingham City Centre and surrounding areas.

Upon entry, you are welcomed into the hallway with ample storage cupboard and access into the open plan lounge kitchen with fitted units and amazing views over Nottingham from the corner windows. Off the hallway is also the family bathroom, first bedroom with shower room en-suite shower room and second bedroom.

The home also offers an allocated parking space.

A viewing is HIGHLY RECOMMENDED to appreciate the opportunity that is at hand - Contact the office before it is too late!



Entrance Hallway

17'03 x 8'6 approx (5.26m x 2.59m approx)

Entrance door to the front elevation leading into the entrance hallway. Carpeted flooring. Wall mounted radiator. Ceiling light points. Large built-in storage cabinet. Intercom system. Internal doors leading into the open plan lounge kitchen diner, bedroom 1, 2 and bathroom

Open Plan Lounge Kitchen Diner

19' x 14'05 approx (5.79m x 4.39m approx)

UPVC double glazed door leading to the Juliet balcony. UPVC double glazed windows to the side and rear elevations. Linoleum flooring and Carpeted flooring. Wall mounted radiator. Ceiling light points. Range of matching wall, base and drawer units incorporating worksurfaces over. Stainless steel sink and drainer unit with swan neck dual heat tap above. Integrated electric oven. 4 ceramic ring hob with extractor unit above. Space and point for freestanding fridge freezer. Space and plumbing for an automatic washing machine. Built-in storage cupboard housing gas central heating combination boiler. Ample space for dining table

Bedroom 1

13'07 x 10'07 approx (4.14m x 3.23m approx)

UPVC double glazed window to the rear elevation. Carpeted flooring. Wall mounted radiator. Ceiling light point. Internal door leading into En-Suite Shower Room

En-Suite Shower Room

7'05 x 4'03 approx (2.26m x 1.30m approx)

Linoleum flooring. Tiled splashbacks. Wall mounted radiator. Ceiling light point. Extractor unit. White 3 piece suite comprising of a walk-in shower enclosure with mains fed shower above, pedestal hand wash basin with dual heat tap and a low level flush WC

Bedroom 2

11'03 x 8'04 approx (3.43m x 2.54m approx)

UPVC double glazed window to the rear elevation. Carpeted flooring. Wall mounted radiator. Ceiling light point.

Bathroom

8'5 x 5' approx (2.57m x 1.52m approx)

Linoleum flooring. Tiled splashbacks. Wall mounted radiator. Ceiling light point. Extractor unit. Shaver point. White 3 piece suite comprising of a panel bath with a dual heat tap, pedestal hand wash basin with dual heat tap and a low level flush WC

Agents Notes: Additional Information

Council Tax Band: B

Local Authority: Nottingham

Electricity: Mains supply

Water: Mains supply

Heating: Mains gas

Septic Tank : No

Broadband: BT, Sky, Virgin

Broadband Speed: Standard 20mbps Ultrafast 1000mbps

Phone Signal: 02, Vodafone, EE, Three

Sewage: Mains supply

Flood Risk: No flooding in the past 5 years

Flood Defences: No

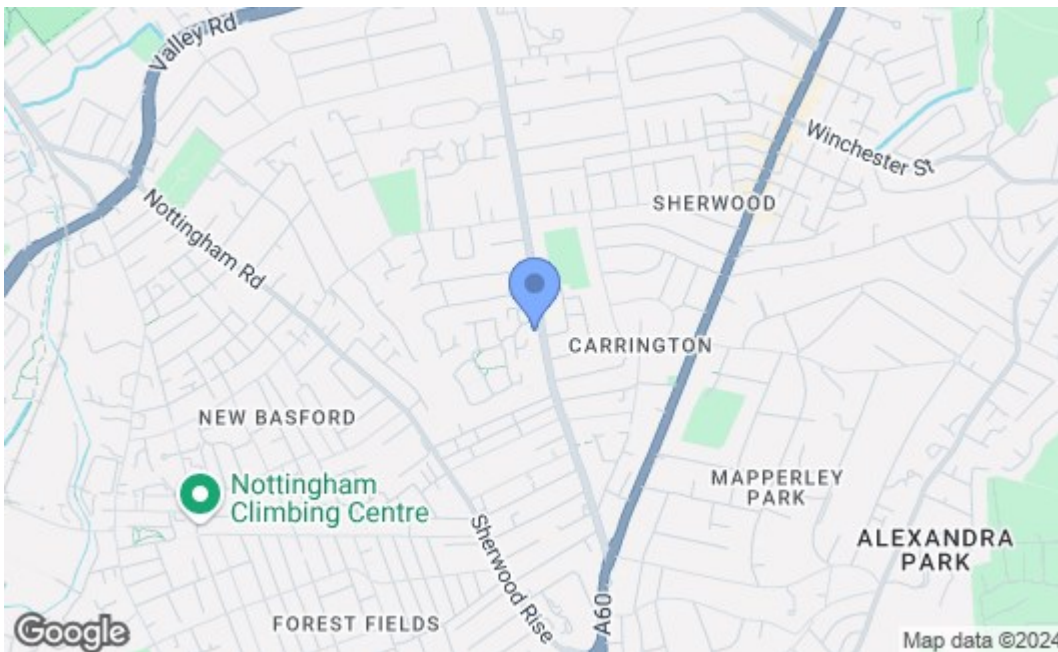
Non-Standard Construction: No

Any Legal Restrictions: No

Other Material Issues: No



Robert Ellis
ESTATE AGENTS



Energy Efficiency Rating		Current	Potential
Very energy efficient - lower running costs			
(92 plus) A			
(81-91) B		80	81
(69-80) C			
(55-68) D			
(39-54) E			
(21-38) F			
(1-20) G			
Not energy efficient - higher running costs			
England & Wales		EU Directive 2002/91/EC	
Environmental Impact (CO₂) Rating		Current	Potential
Very environmentally friendly - lower CO ₂ emissions			
(92 plus) A			
(81-91) B			
(69-80) C			
(55-68) D			
(39-54) E			
(21-38) F			
(1-20) G			
Not environmentally friendly - higher CO ₂ emissions			
England & Wales		EU Directive 2002/91/EC	

These details are for guidance only and complete accuracy cannot be guaranteed. If there is any point, which is of particular importance, verification should be obtained. All measurements are approximate. No guarantee can be given with regard to planning permissions or fitness for purpose. No apparatus, equipment, fixture or fitting has been tested.